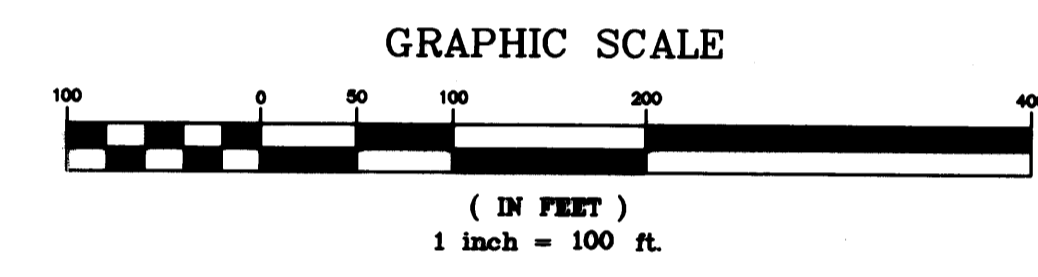
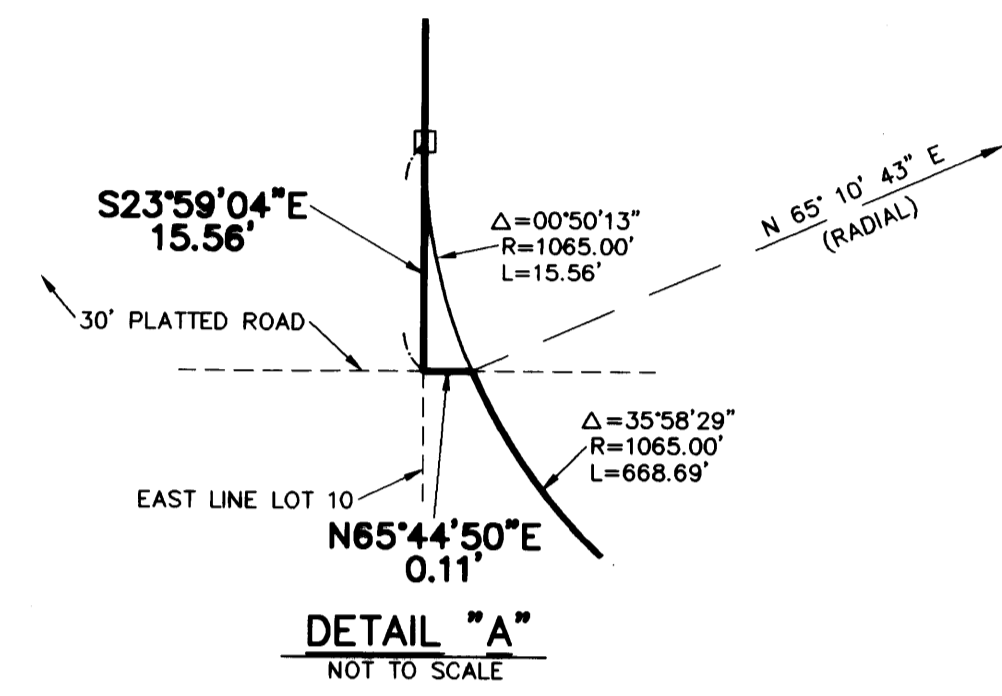
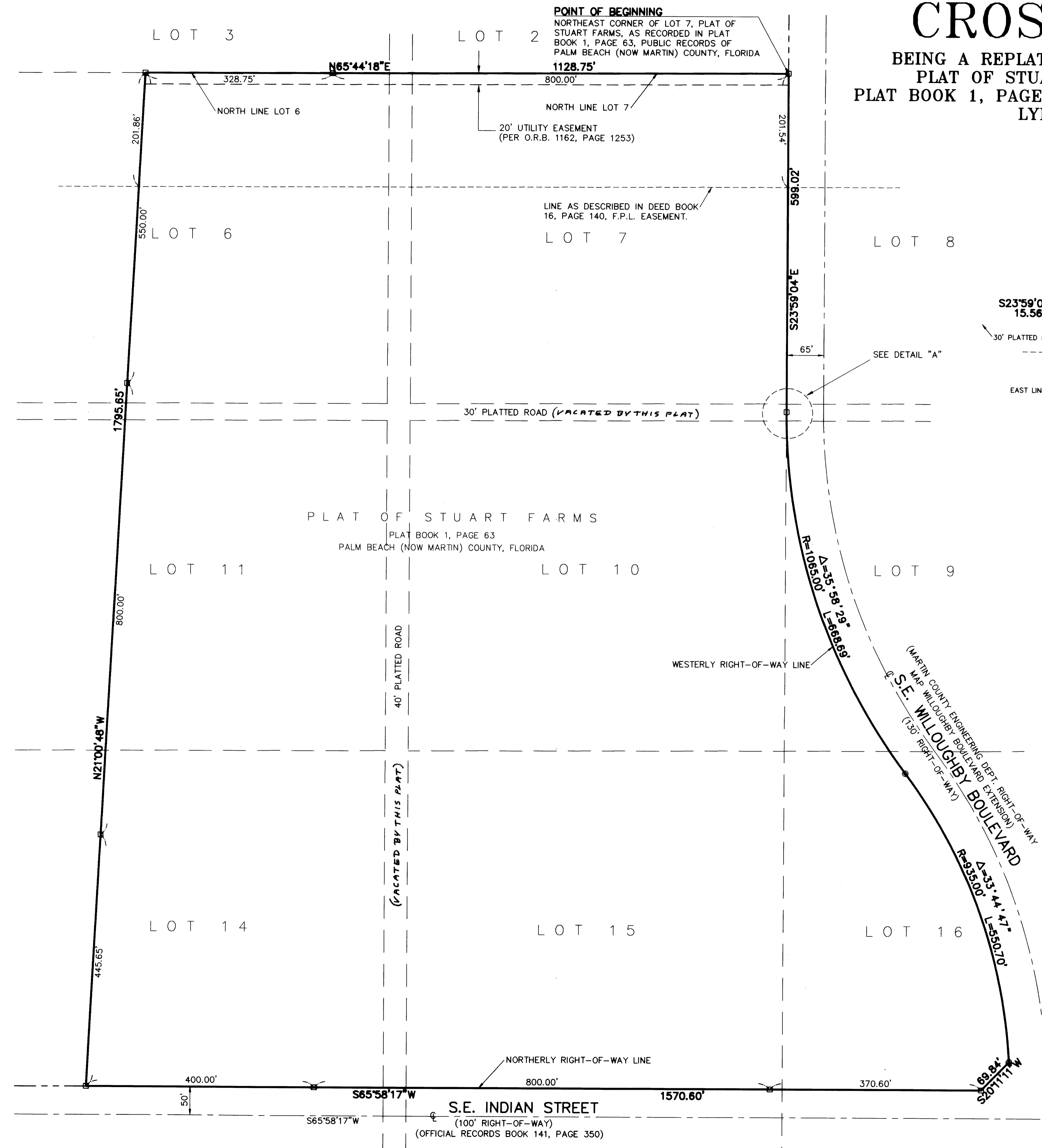
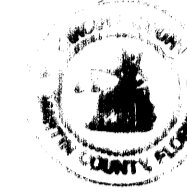


# A PLAT OF CROSSINGS AT INDIAN RUN

BEING A REPLAT OF LOTS 7 & 10 AND A PORTION OF LOTS 6, 9, 11, 14, 15 & 16  
PLAT OF STUART FARMS, ACCORDING TO THE PLAT THEREOF, AS RECORDED IN  
PLAT BOOK 1, PAGE 63, OF THE PUBLIC RECORDS OF PALM BEACH (NOW MARTIN), FLORIDA  
LYING IN THE HANSON GRANT, MARTIN COUNTY, FLORIDA

*Filed for record this  
30th day of Sept., 1997 in  
Plat Book 14 page 37, Public  
Records of Martin County,  
Florida.  
File No: 1252447  
MARSHA STILLEN  
Clerk of Circuit Court  
by Charlotte Buskey, PC*



- LEGEND:**
- - DENOTES SET P.R.M. (PERMANENT REFERENCE MONUMENT) #4873
  - - DENOTES SET PK & DISK (P.R.M. #4873)
  - ⊕ - DENOTES CENTERLINE
  - O.R.B. - OFFICIAL RECORD BOOK

- NOTES:**
1. THIS PLAT, AS RECORDED IN ITS ORIGINAL FORM IN THE PUBLIC RECORDS, IS THE OFFICIAL DEPICTION OF THE SUBDIVIDED LANDS DESCRIBED HEREON AND WILL IN NO CIRCUMSTANCES BE SUPPLANTED IN AUTHORITY BY ANY OTHER FORM OF THE PLAT, WHETHER GRAPHIC OR DIGITAL.
  2. THERE MAY BE ADDITIONAL RESTRICTIONS THAT ARE NOT RECORDED ON THIS PLAT THAT MAY BE FOUND IN THE PUBLIC RECORDS OF THIS COUNTY.

**BEARING BASE:**  
THE CENTERLINE OF INDIAN STREET IS TAKEN TO BEAR SOUTH 65°58'17" WEST AND ALL OTHER BEARINGS SHOWN HEREON ARE RELATIVE THERETO.

**LINDAHL, BROWNING, FERRARI, & HELSTROM, INC.**  
CONSULTING ENGINEERS, PLANNERS & SURVEYORS

210 JUPITER LAKES BLVD. SUITE 104 JUPITER, FL 33468 407-746-9248  
2400 S.E. MONTEREY ROAD SUITE 300 STUART, FL 34996 407-296-3883  
2222 COLONIAL ROAD SUITE 201 FT. PIERCE, FL 34950 407-461-2450  
2000 PALM BEACH LAKES BLVD. SUITE 702 WEST PALM BEACH, FL 33409 407-684-3375

2 2

Sheet of